



HHT Lighting Equipment info pack

Last Updated: Jan 2018

In this document you will find:

1. ETC Element lighting desk basics
2. Guidelines for using Lighting Equipment in the Auditorium
3. DMX Map
4. Gel storage
5. Theatre diagrams
 - a. Stage area
 - b. Grid sockets
 - c. Stage dimensions

Do the stage lights need to be on?

Help us save the environment and money by not leaving stage lights on unnecessarily



For further information please contact Gary Stevenson
ttcbat@teddingtontheatreclub.org.uk

ETC Element lighting desk basics

Powering on

1. If locked, ask the Duty Manager to unlock the Lighting Dimmer Rack cupboard on the grid.
2. Directly in front of you are two black ETC Smartpack dimmer racks. Switch both of these on using the switch at the top of each unit.
3. Remove & store the covers from the desk and two screens.
4. Up to the left of the desk on top of the handrail is a double socket with two white 13amp plugs. Switch both of these on.
5. Behind and below the desk table on the floor is a black APC box with three plugs for the desk & two monitors. This is UPS (uninterruptable power supply) which will continue to power the desk in case of temporary power cuts. Power up this box by pressing the small power button in the corner. It will beep at you.
6. Towards the top right corner of the desk is a power button. Press this and it will light up blue.

WAIT for both screens to activate (this may take a minute or two)

7. Once the desk has finished booting up any scenes that have been recorded in the desk will light up green on the lowest row of sliders. Operating these sliders will bring up the existing states providing the lamps have been left plugged in.

Note: occasionally the Element does not boot up and the internal fan runs continuously with nothing appearing on the screens. If nothing appears after 30 seconds press the power button on the Element for 6 seconds which will force the desk to switch off. Press the power button again and the desk will boot up.

Powering off

1. Press the Displays button twice to ensure the Browser is displayed.
2. Using the mouse select 'Power off device'.
3. Confirm
4. Once shutdown press and hold the power button on the UPS under the table
5. Switch off the two white 13A sockets left of the desk.
6. Push the two buttons on the ETC SmartPack dimmers to trip the power switches off.
7. Close & lock the dimmer cupboard.
8. Replace the covers on the screens and desk.

Show File Template

When creating a new show file you can use a template which has a number of useful defaults already configured. It is also patched as described in the DMX Map shown later in this document.

Open the template folder and within that a file called HHP_Template_2017. Use the Save As option to save the show with your own filename.

The template has the following configured:

1. The channels are patched as described in the DMX Map.
2. Sub 60 is programmed to operate the house lights
3. Some additional effects are pre-configured.

Manual

A printed copy of the Element manual is available in the dimmer room. You can also download a copy from the etconnect website (see address below).

<http://www.etconnect.com/Products/Consoles/Eos-Family/Element/Documentation.aspx>

Off-line Editor (Nomad)

You can download an off-line editor from the etconnect website. Files saved from the off-line editor can be loaded into the Element using a USB stick.

<http://www.etconnect.com/Products/Consoles/Eos-Family/Element/Software.aspx>

Guidelines for using Lighting Equipment in the Auditorium

This document contains a summary of essential information you need in order to use the lighting equipment in the auditorium. Following these guidelines will benefit all users of the theatre and help us to maintain the equipment in good working order.

The *storeroom* referred to in these notes is the right most room (as you face the back of the auditorium) on the grid where all lighting stock and accessories are stored.

To aid identification of equipment each lantern type has a code which is used throughout the lighting equipment. See the stock sheet for details.

Safety

- Equipment must only be operated by trained personnel or under the supervision of trained personnel.
- Extreme care must be taken whilst rigging equipment. It is relatively easy to drop items from the grid. For this reason ensure no one is working beneath you. Hard hats are available and signs on the entrance doors to the auditorium are available to indicate that rigging is taking place.
- The non-fixed bars are rated at 80Kg and must not be exceeded. This equates to about 6 Iris's.
- If you find faulty equipment please remove it from the bars and place it on the bar near the storeroom which is marked 'DO NOT USE'. Please mark the equipment with the fault found using a tag.

Dimmer Packs

- Dimmer Packs 2 and 3 should be left on. All other dimmers and supplies should be switched off when not in use.
- There are 72 installed channels with a maximum load of 2.5KW (10A) per channel.
- All channels are dimmable. The auditorium does not have any switched channels.
- An additional 12 channels are available by way of two DMX 6 channel portable dimmer packs. These are powered using the 32A outlets at grid level.

Lanterns

- Safety chains must be fitted to all lights suspended from lighting bars. Where an anchor point exists on the lantern these must be used.
- Filter frames and barn doors are always stored with the lantern. Other accessories are kept in the storeroom or on the hooks just outside.
- If a lamp requires replacement please make a note in the lamp log book.

Cables

- 15A Extension cables of 1.5m, 3m and 5m should be stored on the hooks on the grid. Longer lengths of 10m are stored in the bins at the stage end of the grid.

Filter

Most of the colour filter stored at the HHT is made by Lee. Non-Lee filter is stored as the nearest Lee colour. Filter is stored as follows:

- The standard colours are available in the drawer unit by the storeroom grouped as either Cold, Warm or Others. We try to ensure we have stock of these colours but this is not guaranteed. Please make a note on the whiteboard of standard colours we have run out of.
- Additional uncut filter (of at least half a sheet) is held in the other drawers.
- Cut filter is stored in wooden boxes by size. Filter should only be stored in these boxes if numbered with the Lee colour number.
- If you cut new filter please ensure that the Lee number is written on it using a chinagraph pencil.
- Metal templates for each frame size are available from the storeroom.

Derigging

At the end of your production we ask that you help us prepare the theatre for the next hirer by doing the following:

- Return all extension cables to the hooks and bins. Return splitters and adaptors to the storeroom.
- Derig all lanterns hung on a non-fixed bar (except Altman Cyc 100's used for Cyclorama lighting).
- Remove iris's, gobos etc. from the lanterns. We also ask that filter (especially strong colours) are removed from the frames and filed accordingly.
- Return all equipment taken to the stage or balcony level back to the grid.
- Areas of the grid are designated as derigging positions for each lantern type. Please derig lanterns to these locations as indicated on the diagram (please see signs down the sides of the grid).

DMX Map

Desk Channel	DMX Start	DMX End	Kit	Channels Required	Other info
1 to 72	1	72	Fixed Dimmers	1	
73 to 78	73	78	BetaPack 1	1	
79 to 84	79	84	BetaPack 2	1	
85	85	85	Portable Dimmer 1	1	
86	86	86	Portable Dimmer 2	1	
87	87	87	Portable Dimmer 3	1	
88	88	88	Portable Dimmer 4	1	
89	89	89	Portable Dimmer 5	1	
90	90	90	Portable Dimmer 6	1	
91	170	179	Altman Cyc 100 Unit 1	10	Mode 608
92	180	189	Altman Cyc 100 Unit 2	10	Mode 608
93	190	199	Altman Cyc 100 Unit 3	10	Mode 608
94	200	209	Altman Cyc 100 Unit 4	10	Mode 608
95	210	219	Altman Cyc 100 Unit 5	10	Mode 608
96	220	229	Altman Cyc 100 Unit 6	10	Mode 608
97	230	239	Altman Cyc 100 Unit 7	10	Mode 608
98	121	131	LED MOVER 1 - EUROLITE TMH-7	11	
99	132	142	LED MOVER 2 - EUROLITE TMH-7	11	
100			Spare		
101	143	145	LED Parcan 1	3	36 x 3W LEDS
102	146	148	LED Parcan 2	3	36 x 3W LEDS
103	149	151	LED Parcan 3 (Gary's)	3	36 x 3W LEDS
104	152	154	LED Parcan 4 (Gary's)	3	36 x 3W LEDS
105	352	355	LED Parcan 5 (Gary's)	4	RGBW
106	356	359	LED Parcan 6 (Gary's)	4	RGBW
107			Spare		
108			Spare		
109			Spare		
110	155	157	Smoke Machine	Allowed 3	
111	158	159	Strobe	2	
112			Spare		
113	113	113	Rehearsal Floods (on stage)	1	
114	114	114	Rehearsal Floods (on stage)	1	
115	115	115	Rehearsal Floods (front)	1	
116	116	116	Rehearsal Floods (front)	1	
117	117	117	Rehearsal Floods (front)	1	
118	118	118	Orchestra Pit	1	
119	119	119	House Lights (centre)	1	
120	120	120	House Lights (sides)1211	1	
121	240	253	Martin Rush MH 6 Unit 1	14	
122	254	267	Martin Rush MH 6 Unit 2	14	

123	268	281	Martin Rush MH 6 Unit 3	14	
124	282	295	Martin Rush MH 6 Unit 4	14	
125	296	309	Martin Rush MH 6 Unit 5	14	
126	310	323	Martin Rush MH 6 Unit 6	14	
127	324	337	Martin Rush MH 6 Unit 7	14	
128	338	351	Martin Rush MH 6 Unit 8	14	
Unpatched	161	161	Scroller 1	1	Patch to the correct dimmer as part 2
Unpatched	162	162	Scroller 2	1	
Unpatched	163	163	Scroller 3	1	
Unpatched	164	164	Scroller 4	1	

GEL STORE

Lighting gels are stored in boxes:

- Patt 23
- Acclaim
- TBA
- Prelude (and some Source F's at the back)
- Cantata/Optique
- ParNel
- Patt 743
- Parcan
- Iris

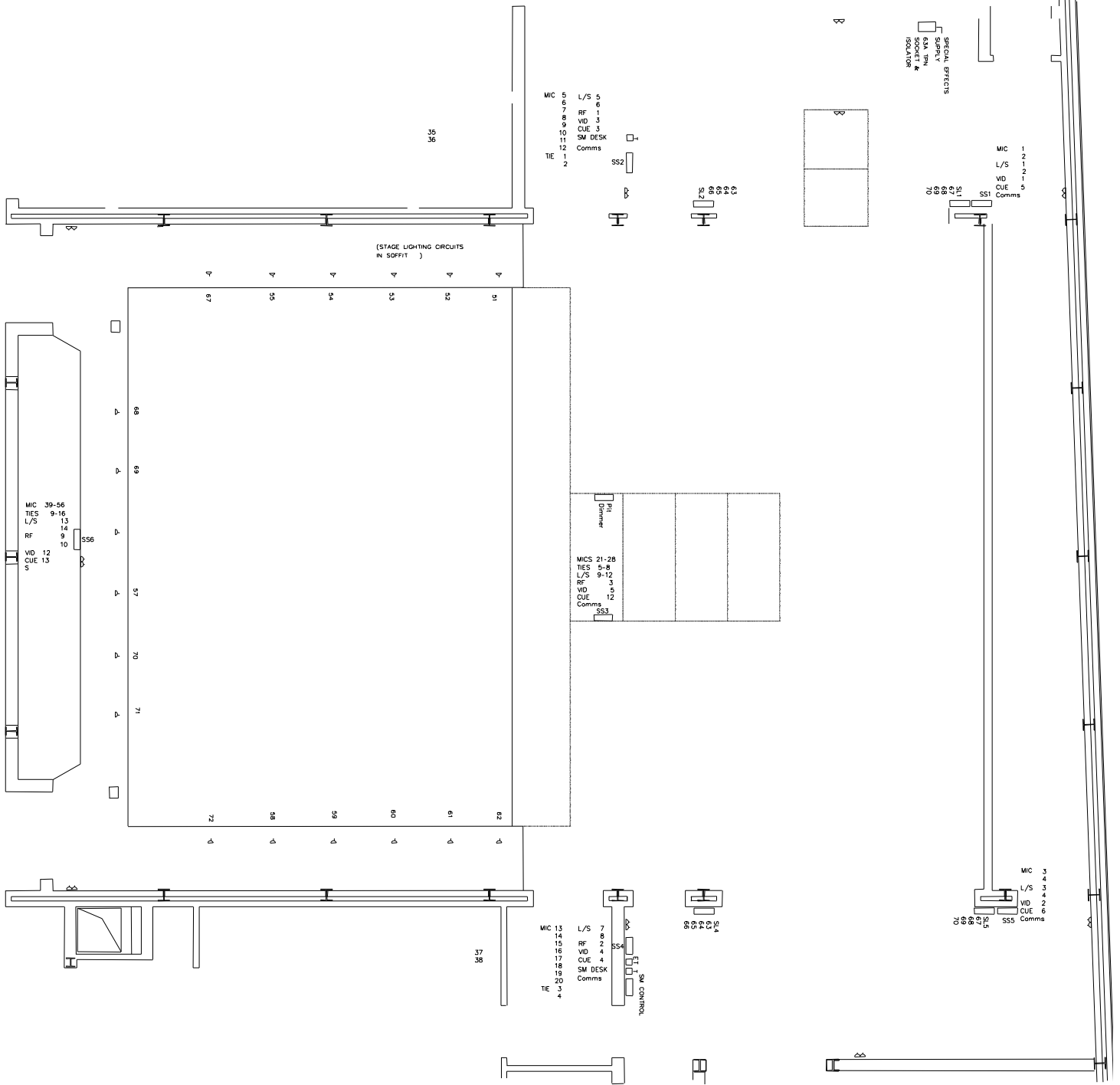
Boxes are divided into sections:

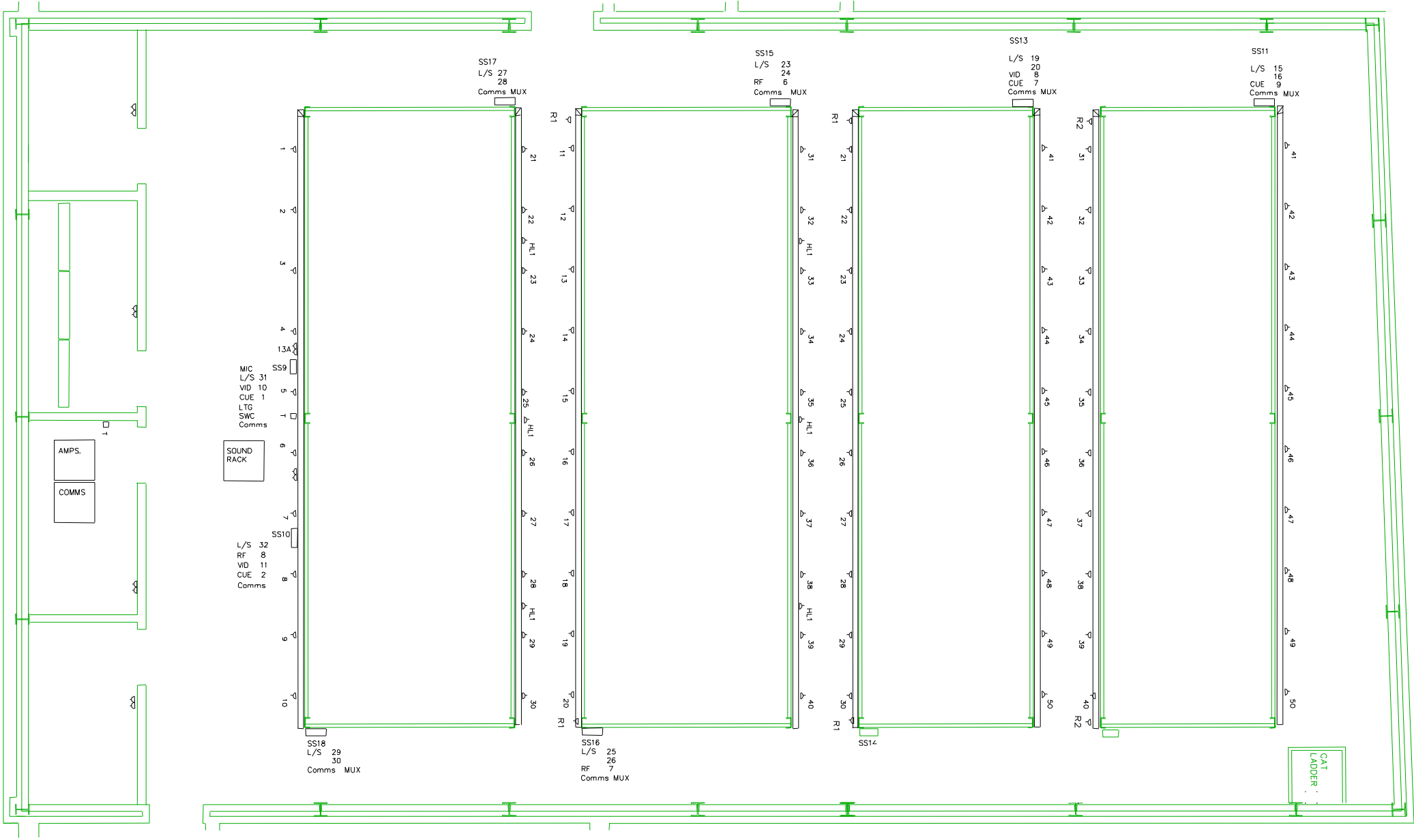
- RED / pink / includes gold 151 and 152
- ORANGE / amber / apricot / straw
- YELLOW
- GREEN
- BLUE includes daylight correction
- PURPLE / lavender
- CHOCOLATE and DIFUSION FILTERS

**THE GELS WITHIN EACH SECTION ARE IN LEE REFERENCE
NUMBER ORDER,
LOWEST NUMBER AT THE FRONT**

**WHEN CUTTING NEW GELS please mark with the number in
white chinagraph pencil**

**WHEN DE-RIGGING please replace gels in the right
box/colour/numerical order**





SS17
L/S 27
28
Comms MUX

SS15
L/S 23
24
RF 6
Comms MUX

SS13
L/S 19
20
VID 8
CUE 7
Comms MUX

SS11
L/S 15
16
CUE 9
Comms MUX

MIC
L/S 31
VID 10
CUE 1
LTG
SWC
Comms

SOUND RACK

L/S 32
RF 8
VID 11
CUE 2
Comms

SS18
L/S 29
30
Comms MUX

SS16
L/S 25
26
RF 7
Comms MUX

SS14

CAT LADDER

AMPS.
COMMS

1 P
2 P
3 P
4 P
5 P
6 P
7 P
8 P
9 P
10 P

21
22
HL1
23
24
25
HL1
26
27
28
HL1
29
30

R1
11 P
12 P
13 P
14 P
15 P
16 P
17 P
18 P
19 P
20 P
R1

31
32
HL1
33
34
35
HL1
36
37
38
HL1
39
40

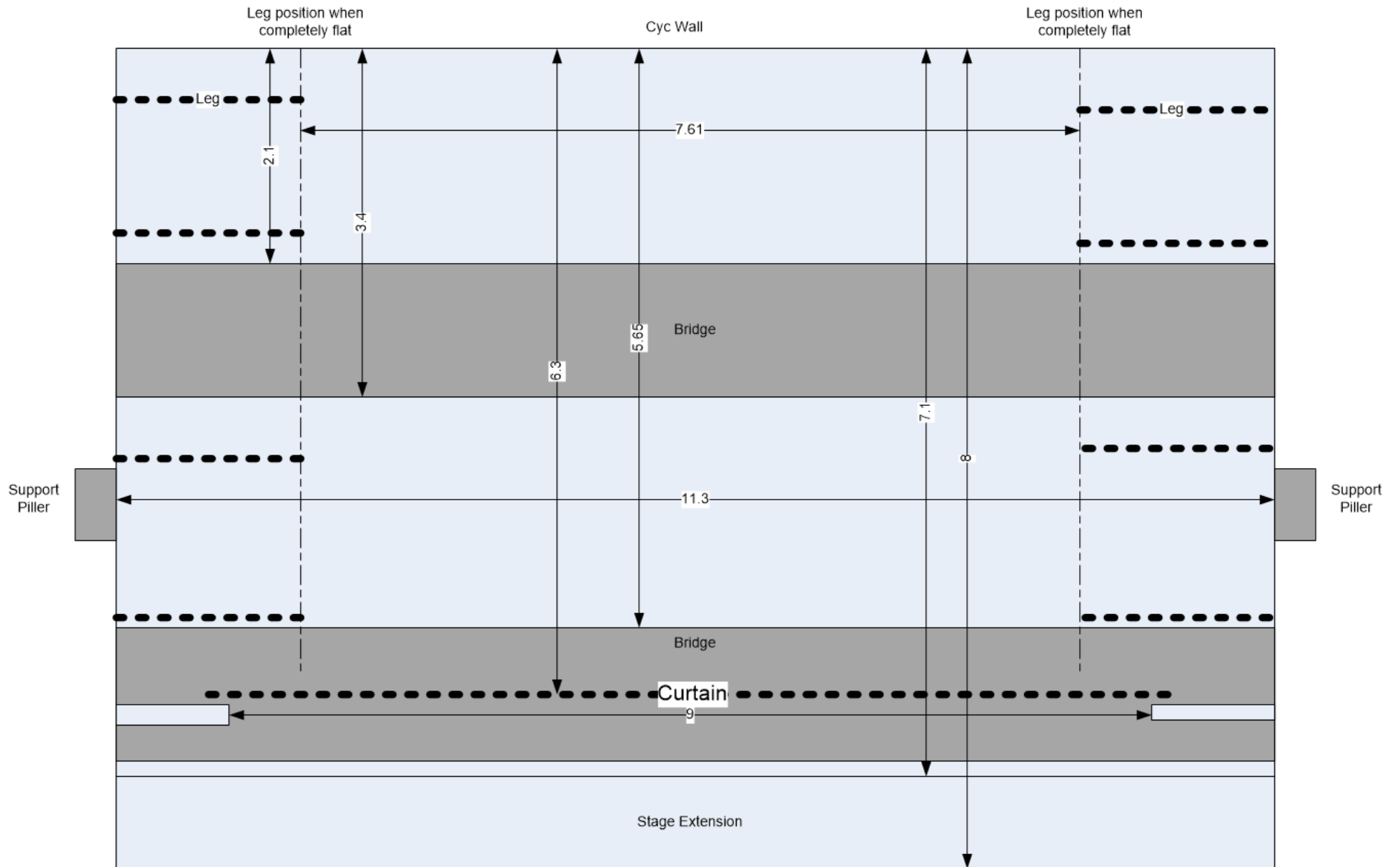
R1
21 P
22 P
23 P
24 P
25 P
26 P
27 P
28 P
29 P
30 P
R1

41
42
43
44
45
46
47
48
49
50

R2
31 P
32 P
33 P
34 P
35 P
36 P
37 P
38 P
39 P
40 P
R2

41
42
43
44
45
46
47
48
49
50

Auditorium Main Dimensions



Distances in Metres